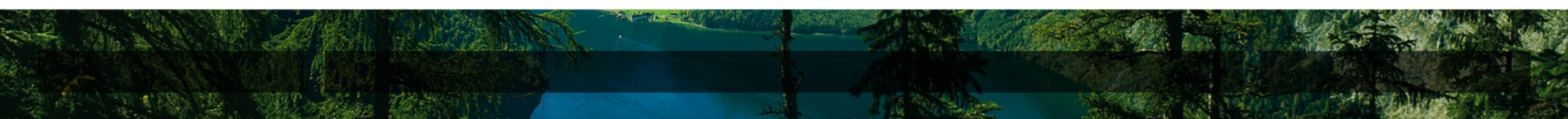


## INNOVATION IN NATURE PROTECTION – A NEW VIEW OF ALPINE BIODIVERSITY





# The Alps – a biodiversity Hotspot







## Alpine Convention

Protocol « Protection of nature and landscape conservation »

### Article 12 - Ecological network

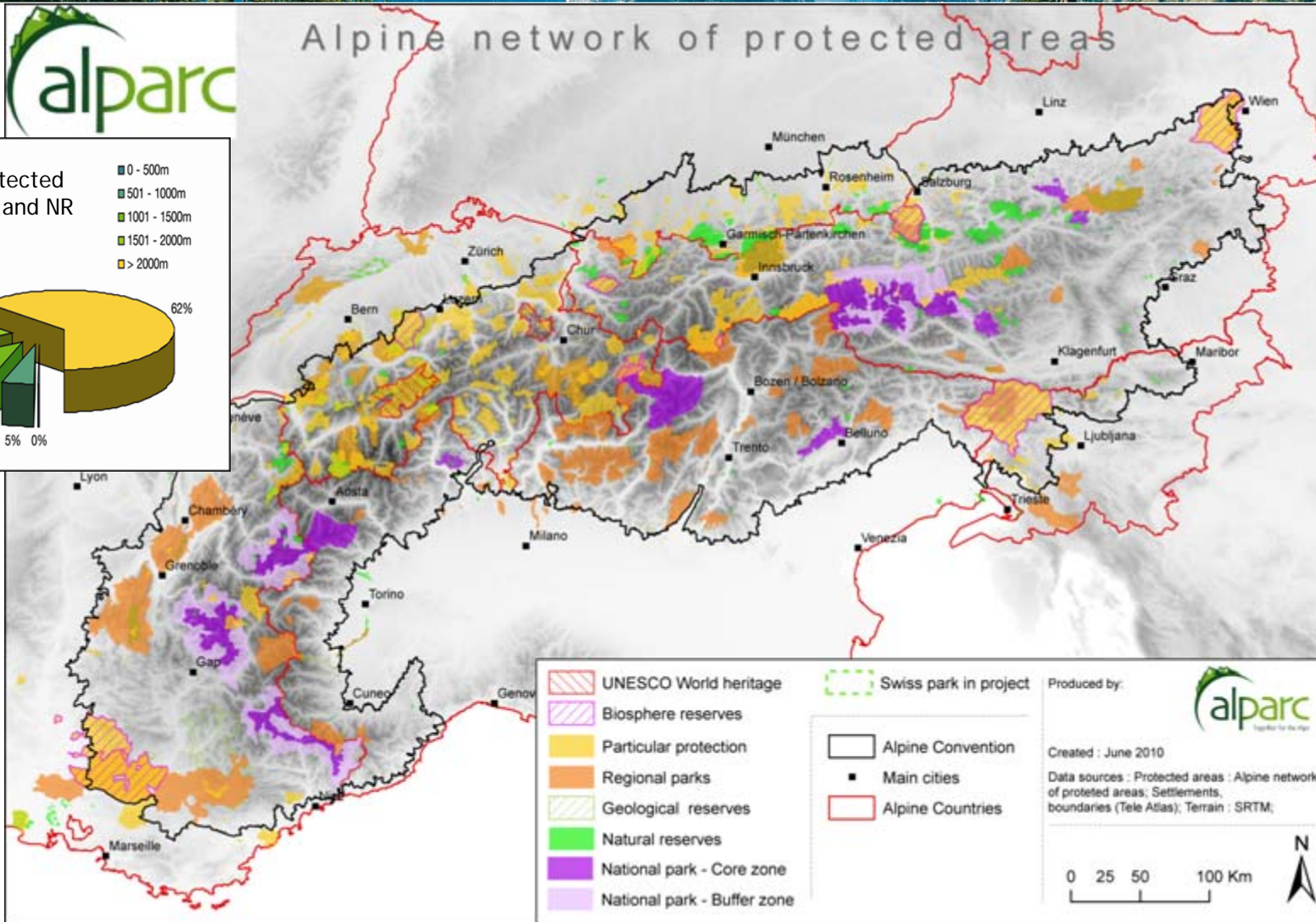
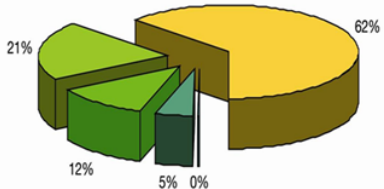
The Contracting Parties shall define appropriated measures for the creation of a national and cross border network of protected areas, biotopes and other environmental assets protected or recognized to be protected. They shall harmonise the objectives and management measures between cross-border protected areas.



# Alpine network of protected areas

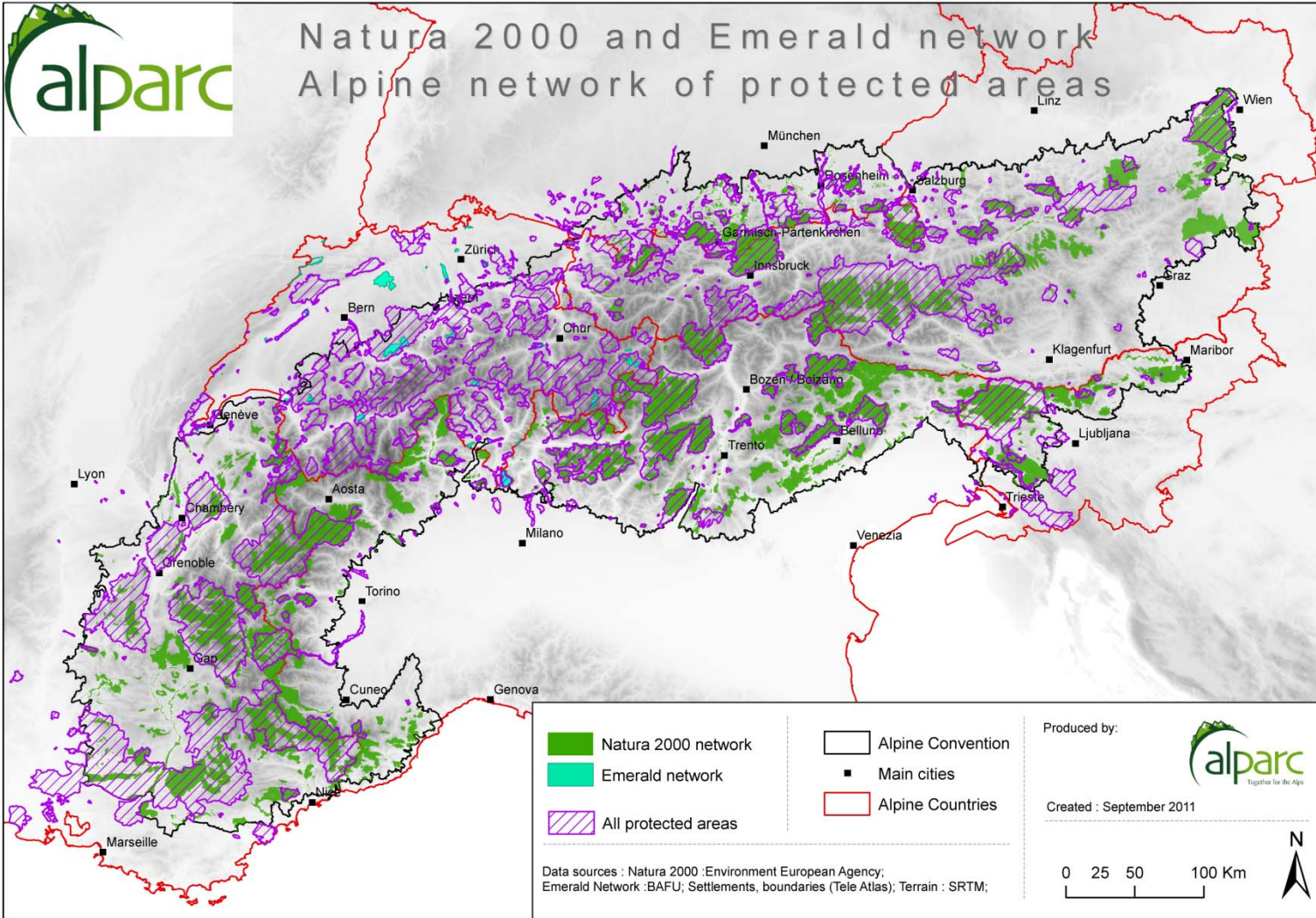
Strong protected areas : NP and NR

- 0 - 500m
- 501 - 1000m
- 1001 - 1500m
- 1501 - 2000m
- > 2000m

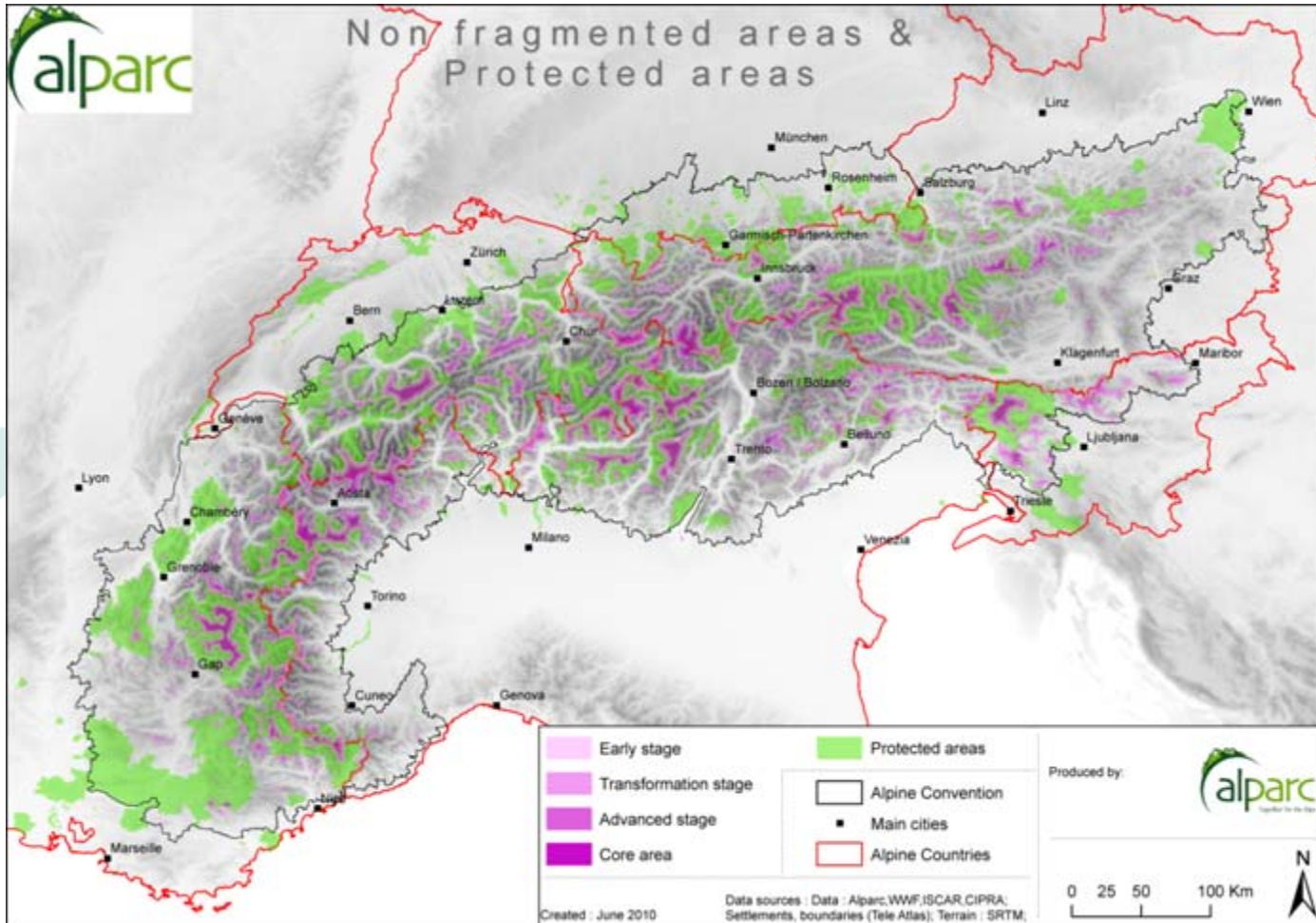


Produced by: **alparc**  
 Created : June 2010  
 Data sources : Protected areas : Alpine network of protected areas; Settlements, boundaries (Tele Atlas); Terrain : SRTM;









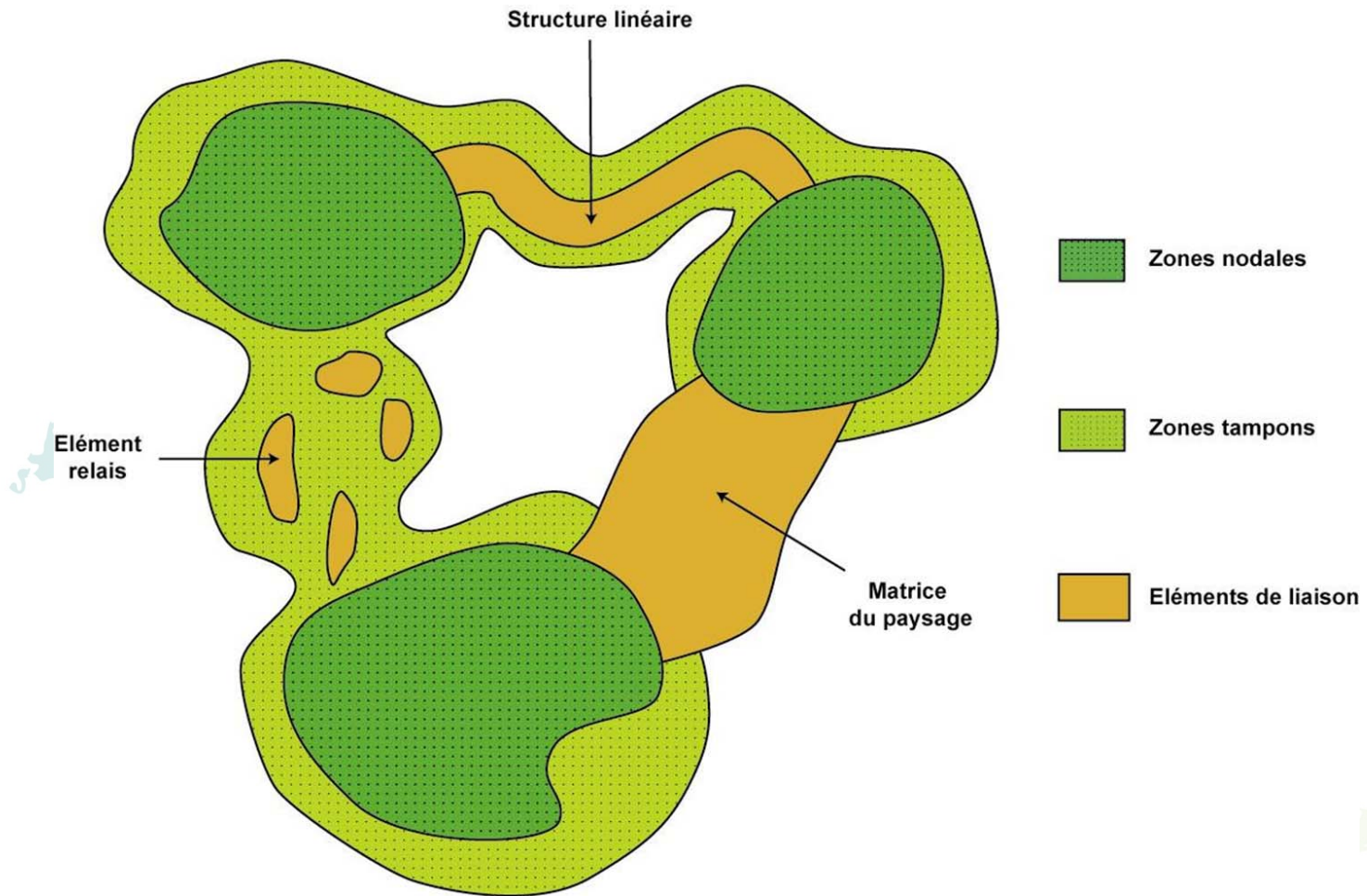


Mandate from the Alpine Conference 2006, 2009 and 2011

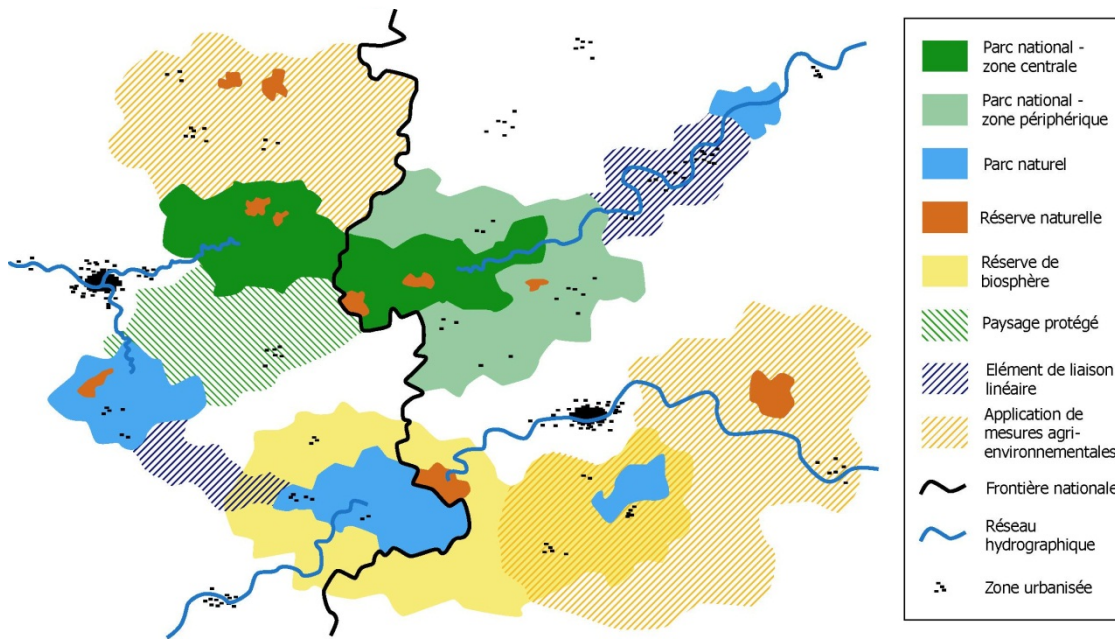
### Objectives:

- Working Group of information exchange, experience and know-how
- Act as facilitator for the conceptualisation and implementation of projects concerning ecological connectivity
- Support the different alpine initiatives for a holistic and alpine wide planning and implementation process
- Work closely with Pilot Regions on implementation initiatives









- **Protected areas :**
- established structures on the ground
- important network of contacts to local stakeholders
- permanent staff present on the ground
- good ecological knowledge and data



## Approach and Pilot regions

Protection of biodiversity and natural heritage requires an **integrated approach** which beyond protected areas considers **high biodiversity areas** and **corridors** as linking elements of an Alpine ecological network.

### WP 7 - Implementation in 7 Pilot Areas

- Goal: Continuum of habitats and reduction of fragmentation
- Methodology: Analyse of the local situation with specific needs for single species
- Tools: Special mapping and analyse tools (JECAMI)
- Realisation: planning on local scale and implementation of measures
- Acceptation: Involvement\_of all relevant stakeholders



## Selected species for terrestrial models:

Black grouse



Wolf



Griffon vulture



Lynx



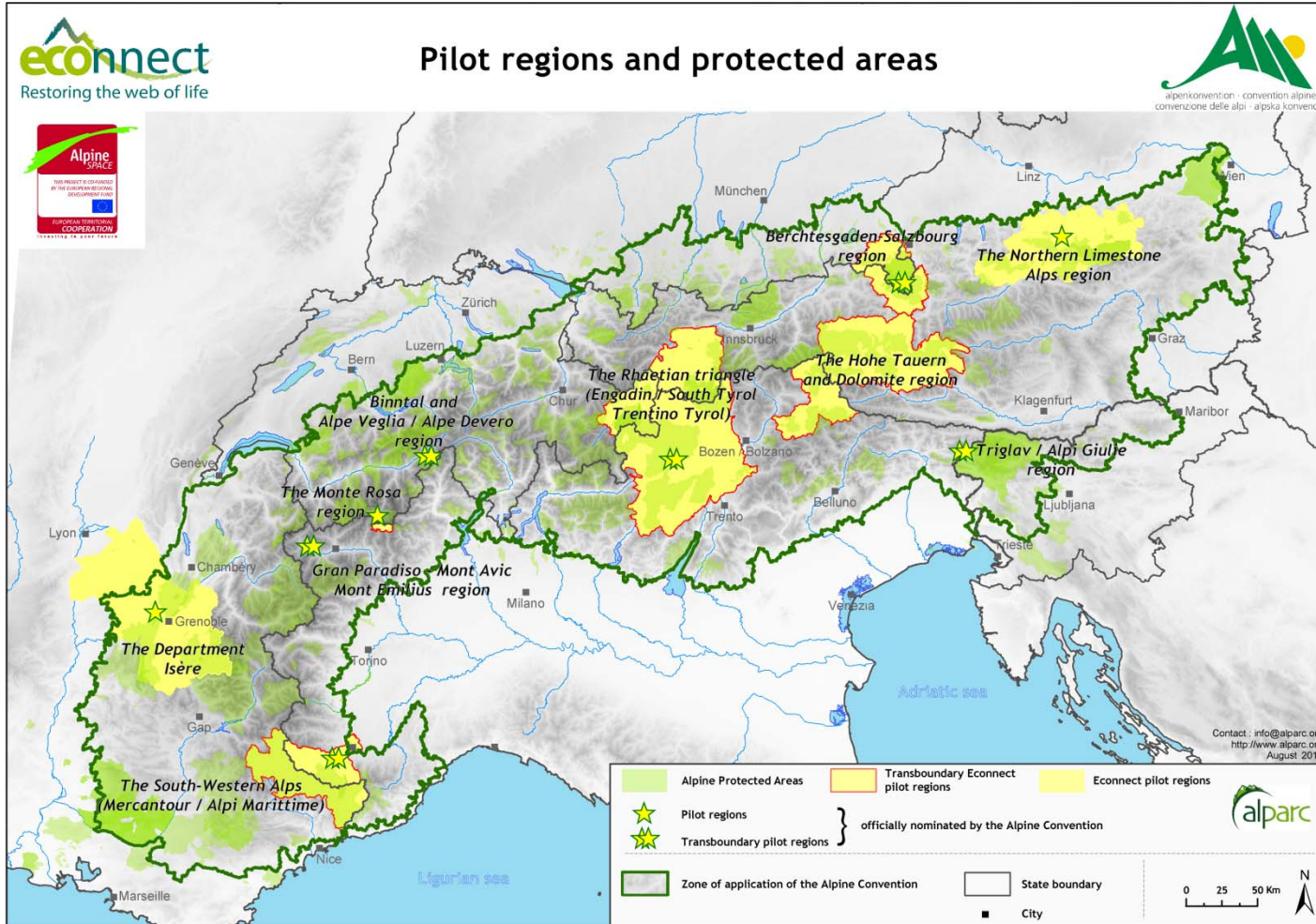
Brown bear



Red deer







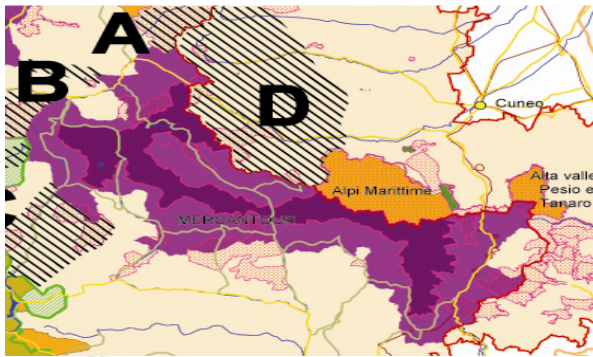
N°	Activity	Description	Timeframe	Result/output	Workflow	Interface
			Deadline			
13	Detailed organisation of each action	For each of the 4 actions to be realised in the frame of ECONNECT: - define responsibilities - detailed plan: budget, timeframe, human and technical resources	January 2011	- 3 contractual measures (this means not necessarily contracts but it has to be documented as a measure, i.e. the inscription of a "connectivity policy" in the documents of the physical planning of the region, agreements or conventions, etc.). The finance of such measures should be insured in a middle or long term (5 - 25 years) by the public administrations.  - 1 spatial link  Detailed plan on how to proceed for each action	WP 4-5-7	between WPs-7
14	Start Action	Consultation and definition of objectives	August 2011	Actions realised (one spatial link, three measures)	WP7	
15	Realisation	- terms of reference - signatures -Accomplishment of the work on the ground	August 2011	Concrete actions	WP7	
16	Monitoring of actions	Based on indicators defined by WG of WP7 indices in cooperation with WPs and WP4.	During realisation	control	WP7 (proposal link to competence network)	Common definition of indicators for long term monitoring of actions by WP4, 5 and 7.
17	Evaluation of the activities	Evaluation of the ecological, social and economic effects, long term perspectives.	After end of project	Assessment reports Self-evaluation	WP5 - WP7 - WP8	Synthesis with recommendations for alps-wide and regional level.

## 17 steps for ECONNECT:

- Implementation strategy
  - 3 measures
  - 1 spatial measure
- Stakeholder involvement
- Detailed planning and mapping
- Data creation and knowledge concentration
  - Monitoring
  - Long term vision
  - Communication
- Animation of a process



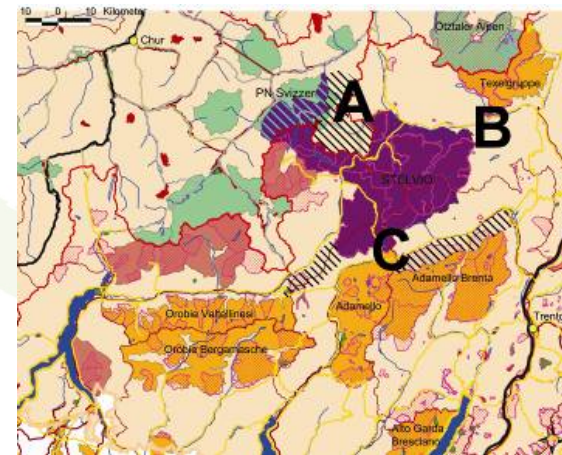
## Work in Pilot Regions



Create local ecological networks between PA's and surrounding areas of high biodiversity:

- identify the potential
- Planify the activities
- Implement first actions

- include economic stakeholders and population
- identify legal gaps and develop possible solutions for new legal obligations
- precise mapping
- development of measures + implementation



## Continuum Suitability Index (CSI)

- Analysis on the landscape level
- The indicator contains a wide range of topics, from biology, landscape ecology and geography up to socio-economy
- A quality indicator informs about the underlying data properties
- The CSI-Tool is part of the JECAMI\*-Webservices and is available on the Web

\*Joint Ecological Continuum Analysis and Mapping Initiative



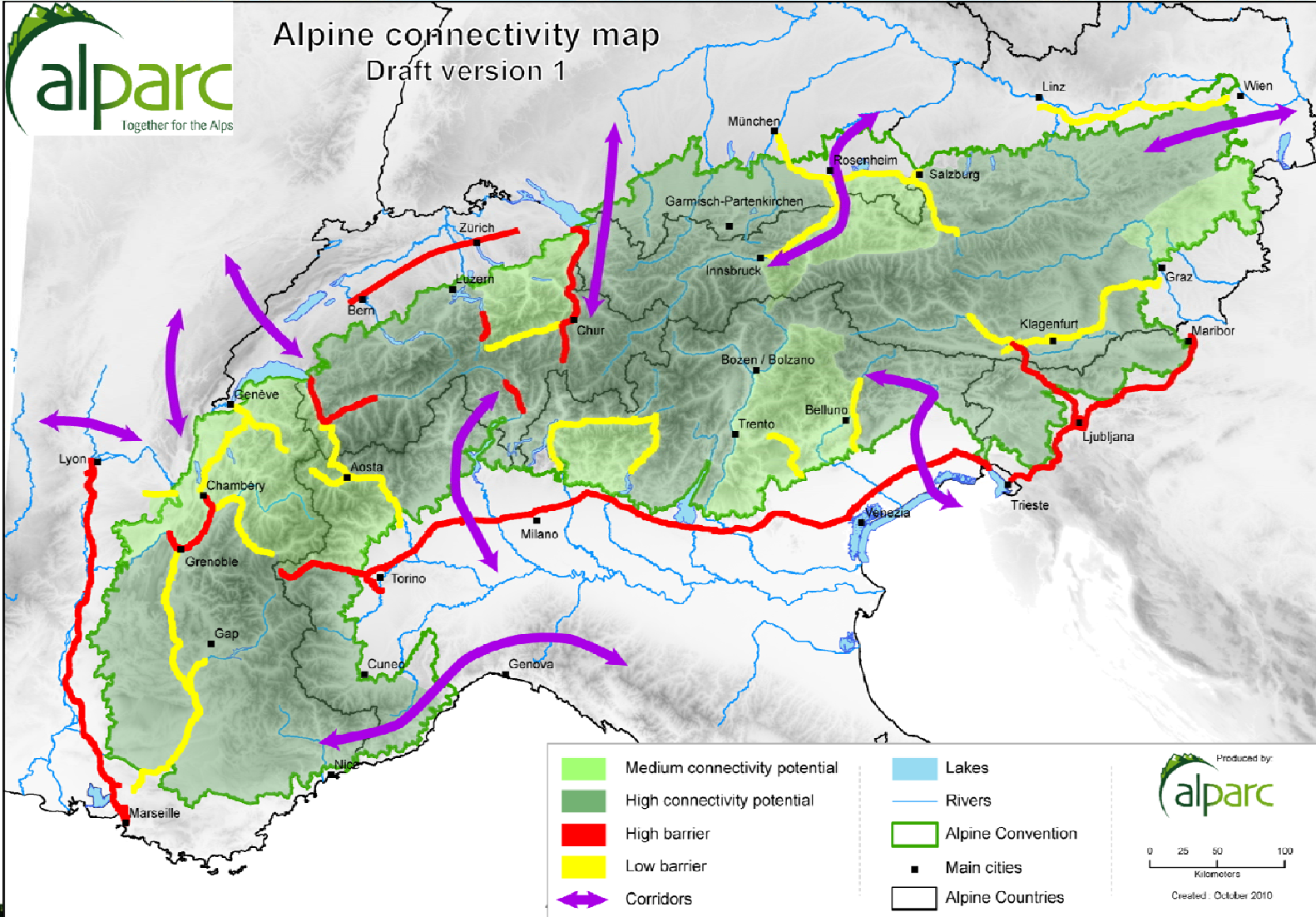
The screenshot displays the JECAMI web services interface. At the top, there is a navigation menu with links: HOME, ABOUT THE PROJECT, PILOT REGIONS, WORK PACKAGES, PARTNERS & OBSERVERS, NEWS & EVENTS, DOWNLOAD AREA, and LINKS. The main content area features a map of the Parco Nazionale dello Stelvio region, overlaid with various data layers. The map is color-coded, with red and orange areas indicating higher values or specific land use. A legend on the right side of the map lists the following layers: Pilot areas, Municipality borders, Protected areas, Landuse (LAN), Landuse Planning (LAP), Population (POP), Infrastructure (INF), Altitude & Topography (TOP), Fragmentation (FRA), Patch Cohesion (COH), Edge density (ED), Environmental Protection (ENV), and Ecological Features (ECO). Below the legend, there is a section for 'Analyse Area' with a search bar and buttons for 'Durchsuchen', 'Upload File', and 'Clear'. At the bottom of the interface, there is a footer with the text: WWF Italia ONG-Orlus - Programma Api P.I. IT.02121111005 - api@wwf.it, Reserved Area News RSS, XHTML | CSS Requisites Credits, and a URL: <http://www.jecami.org>.

# JECAMI web services

## RESULTS : Methodology and knowledge development

- **Guidelines** for a common procedure in pilot regions includes target species determination
- **Mapping** tool for ecological connectivity in pilot regions (Jecami), Development of the Continuum Suitability Index (CSI)
- **First implementation** activities: mapping, stakeholder involvement
- **Nomination** process of **official alpine pilot regions** 6 out of 7 PR of ECONNECT !











## What was ECONNECT?

- 1) A new approach going beyond the classical island protection
- 2) The only way to insure biodiversity in a sustainable way in the Alps and an answer to alpine climate change
- 3) A new and not easy challenge for Protected area managers acting as « animators » of a process
- 4) A start point to involve strongly all relevant stakeholders and to start a not reversible process
- 5) A chance to develop high sophisticated tools for connectivity analysis adapted to the alpine space but not only

What was it not...:

...a project to realise an ecological network...

...a project to realise an ecological network...

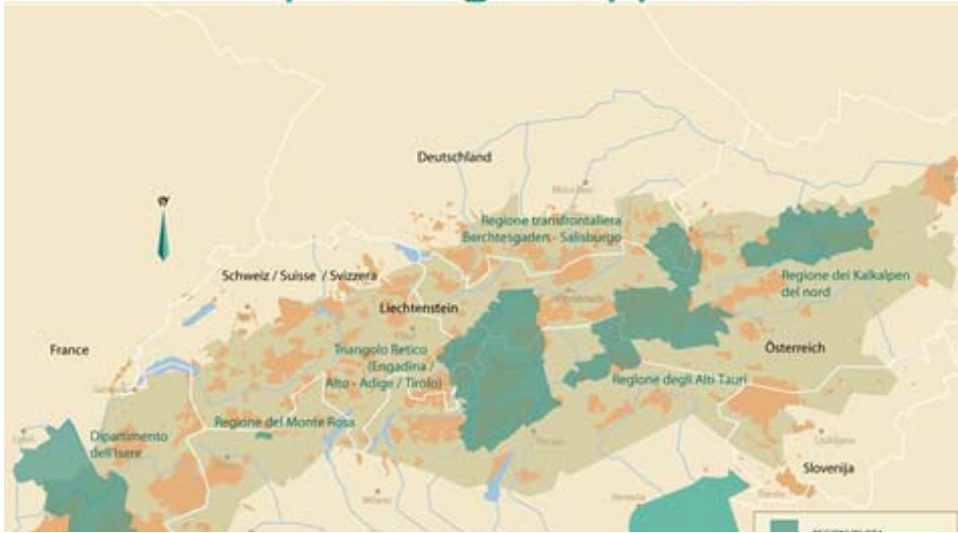
This would be a task for one generation...at least!

Nevertheless ECONNECT is a concrete start point.





# The pilot region approach



# Alps & Carpathians

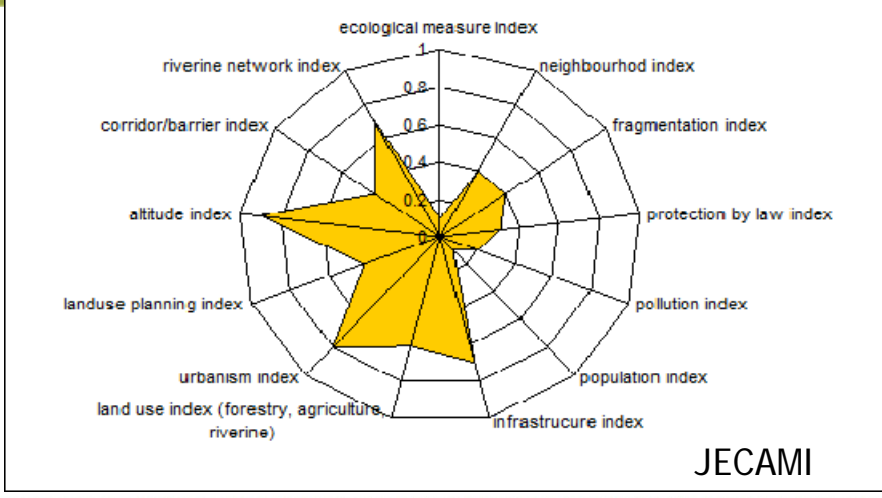
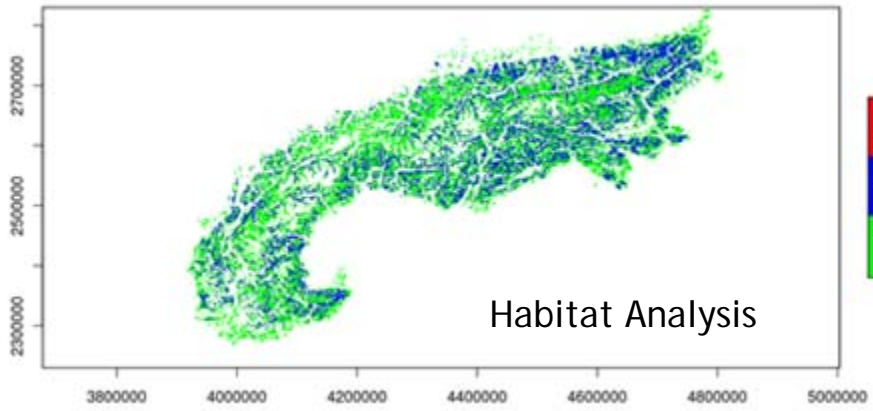
A common heritage for European Biodiversity

**Alparc** **CNPA**

2010

Alparc - Carpathian Network of Protected Areas

- Network of 100 Natura 2000 sites
- 200 km<sup>2</sup> of protected areas
- Largest European bird's nesting population
- Most European forest types
- Alps - Alps - Carpathians cooperation area





Guido Plassmann

CONTACT:

Task Force Espaces Protégés  
Permanent Secretariat of the Alpine Convention

Maison des parcs et de la montagne

256 rue de la République

F - 73000 CHAMBERY

+33 / (0)4 79 26 55 06

[info@alparc.org](mailto:info@alparc.org)

[www.alparc.org](http://www.alparc.org)



alpenkonvention convention alpine convenzione delle alpi alpska konvencija